



our
PRODUCT
Cornish Tin

Blue Hills Cornish Tin is designed and cast here into a unique range of jewellery and giftware that can be purchased on site or online at our web site www.bluehillstin.com

BLUE HILLS TIN



SAT NAV - IMPORTANT

Tap in WHEAL KITTY (twice if needed)
When you get to Wheal Kitty continue on for another mile following our BROWN SIGNS.

General Directions.

Turn off the A30 at Chiverton roundabout, taking the B3277 to St. Agnes. Go through the village one way system taking the B3285 towards Perranporth. Turn left to Wheal Kitty and right at the grass triangle following the BROWN SIGNS to Blue Hills Tin down into the steep valley.

FROM NEWQUAY / PERRANPORTH direction, take the B3285 to St. Agnes and turn off when you see our BLUE HILLS TIN brown sign at St. Agnes, then follow the signs to our works.

Open April 18th to October 29th.
10.00 am to 2.00pm

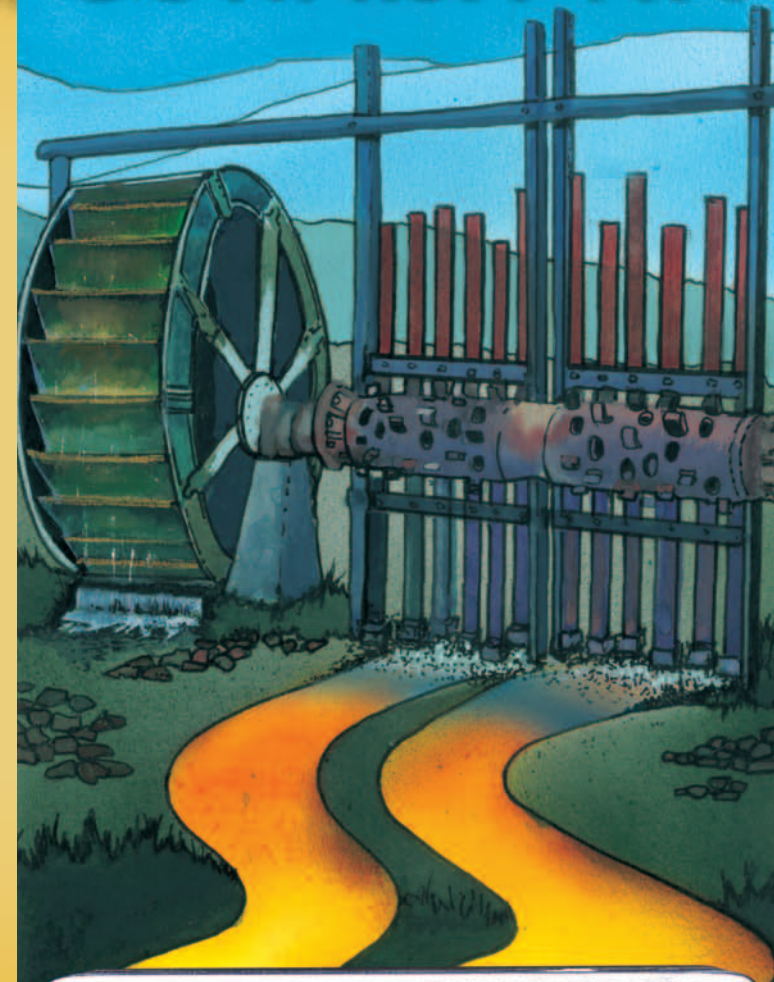
July, August, September 10.00am to 4.00pm
Monday to Saturday inc. Closed Sundays
Adults £6.00 Children £3.00

Colin & Mark Wills, Blue Hills Tin
Wheal Kitty, St Agnes, Cornwall

Telephone: 01872 553341 www.bluehillstin.com

the only tin producer in Cornwall!

BLUE HILLS CORNISH TIN



Tin is rock when it comes out of the Earth
Find out how we turn it into metal

this is what we do here . . .

BLUE HILLS CORNISH TIN

Tin Streamers, Smelters & Refiners

*the only tin producer
in Cornwall!*

Tin mining in Cornwall may have died but tin streaming has not.

Meet the craftsmen who extract the ore, dress it, smelt it, refine it and make it into the final end product. Follow the working process on a gentle walk around the site.

Or, just visit to buy Cornish Tin giftware and jewellery made here from our beautiful refined Blue Hills Cornish Tin.

Blue Hills is owned and run by the Wills family. A Cornish family who have been involved with mining for generations and have been producing tin on this site for 35 years.

